

Yakutat Tlingit Tribe

606 Forest Hwy. 10 * P.O. Box 418 * Yakutat, Alaska 99689
Phone (907) 784-3238 * Fax (907) 784-3595 * www.ytttribe.org



Request for Qualifications (RFQ) For:

Covid-19 PPE Storage Unit
Covid-19 Greenhouse
Covid-19 Compost Unit

Date Issued: 8/21/2020

RFQ due 8/28/2020

MISSION

To preserve, maintain and protect the unique culture, land & resources of Yakutat Tlingit people;
to maximize our social, health & well-being while creating economic development benefits to all tribal members.



Yakutat Tlingit Tribe

606 Forest Hwy. 10 * P.O. Box 418 * Yakutat, Alaska 99689
Phone (907) 784-3238 * Fax (907) 784-3595 * www.ytttribe.org



Summary

Yakutat Tlingit Tribe (YTT) is requesting an RFQ from all interested contractors for the Covid-19 project construction, management, and training of two to four Tribal apprentices while working on this project. These funds are coming from Federal dollars for the three structures using Covid-19/CARES funding and are subject to federal compliance and reporting. The first structure will be a 60x40 PPE storage unit, the second structure will be a 30x60 greenhouse. The third will be a 20x12 compost structure, site prep to development. These funds are under a time constrain, and a short window for building. The three buildings will need to be completed by December 30th, 2020.

Project Schedule

Publish RFQ	August 21, 2020
Project Submission Deadline/Award Project	August 28, 2020
Project overview and Meeting	August 31, 2020
Begin Project management	August 31, 2020
End of Project	December 30, 2020

Proposal Submission Deadline: A complete proposal package must be received by YTT no later than 4:00 pm August 28th, 2020 Alaska Time delivered to:

Yakutat Tlingit Tribe

ATTN: Penny James

pjames@ytttribe.org

PO Box 418

606 Forest Hwy 10

Yakutat, AK 99689



To preserve, maintain and protect the unique culture, land & resources of Yakutat Tlingit people;
to maximize our social, health & well-being while creating economic development benefits to all tribal members.



Yakutat Tlingit Tribe

606 Forest Hwy. 10 * P.O. Box 418 * Yakutat, Alaska 99689
Phone (907) 784-3238 * Fax (907) 784-3595 * www.ytttribe.org



Background Information: YTT and Yakutat has been greatly impacted by the Covid-19 pandemic, and as such has received CARES funding to help the community. These funds will be used to construct a prefab PPE storage unit to house and store medical equipment and supplies in the event of an outbreak in Yakutat. We will also construct a prefab greenhouse that will be used to provide food in the event that we no longer received outside barge or airlines shipments. We will also construct a compost building for recycling local food waste.

Project Site: The project is located just off of Glacier Bear Road to the right, just before the Glacier Bear Lodge. Lots 3 & 4. (Site plan attached.)

RFQ Components and Scoring Criteria: The RFQ will be evaluated and scored based on the following Criteria: Qualifications, Technical proposed plan and Cost. The RFQ will be evaluated on the ability to show the projects can be completed in a timely manner (December 30th, 2020).

1. Qualifications
 - a. Equipment readily accessible for project
 - b. Project experience – Steel warehouse & prefab construction
2. Training Approach & Plan
3. Contractor Fee to Administer

Insurance Requirements: Contractors must submit an insurance certificate with YTT listed as Certificate Holder.

- The contractor is to carry the following minimum coverage for general liability:
 - YTT shall be named as an 'Additional Insured' under all liability coverages except for Worker's Compensation Insurance.
 - \$1,000,000 of General Liability Insurance
 - \$500,000 each occurrence

VISION To preserve, maintain and protect the unique culture, land & resources of Yakutat Tlingit people;
to maximize our social, health & well-being while creating economic development benefits to all tribal members.



Yakutat Tlingit Tribe

606 Forest Hwy. 10 * P.O. Box 418 * Yakutat, Alaska 99689
Phone (907) 784-3238 * Fax (907) 784-3595 * www.ytttribe.org



Cost Proposal: Project Management fee – 4 months

- Planning
- Coordination
- Training Plan & Implementation
- Supervision
- Cost Estimate Preparation
- Procurement

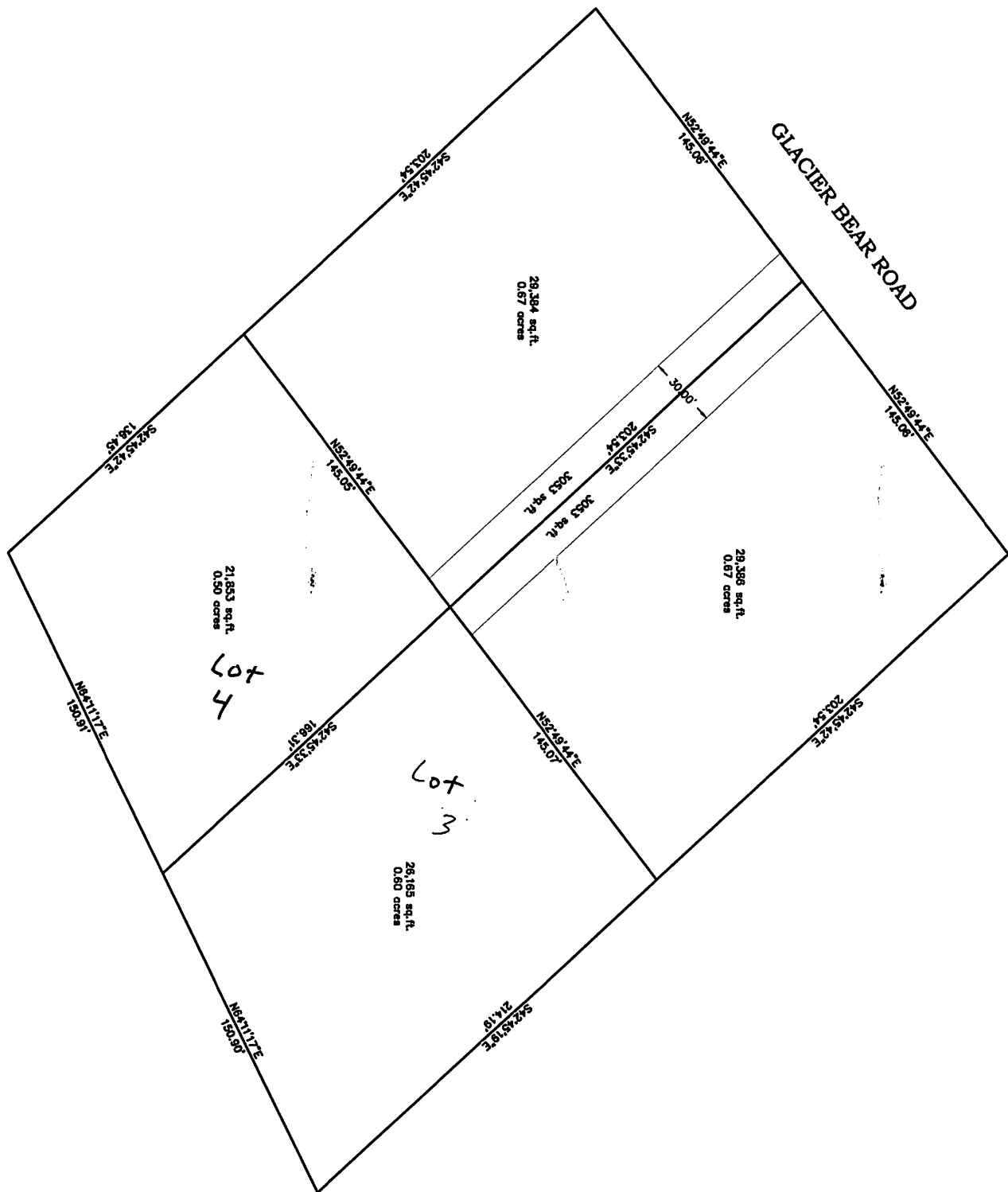
Selection will be made to the responsible offeror submitting a proposal, which conforms to the solicitation and is most advantageous to YTT considering the factors and any significant sub-factors listed in this provision. YTT reserves the right to reject any and all proposals.

*Please see attached samples structures for this project.

MISSION

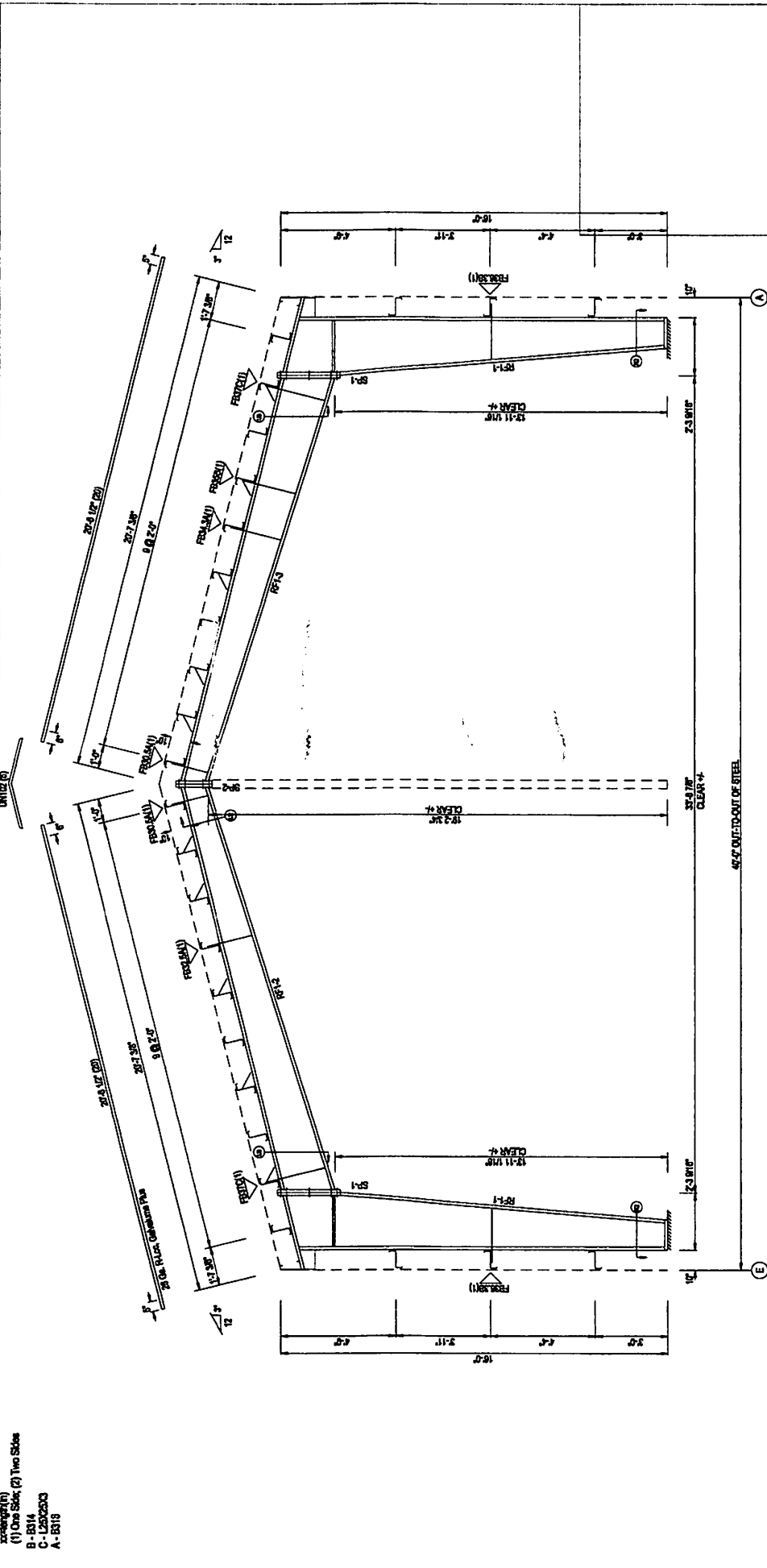
To preserve, maintain and protect the unique culture, land & resources of Yakutat Tlingit people;
to maximize our social, health & well-being while creating economic development benefits to all tribal members.





PPE STORAGE STRUCTURE

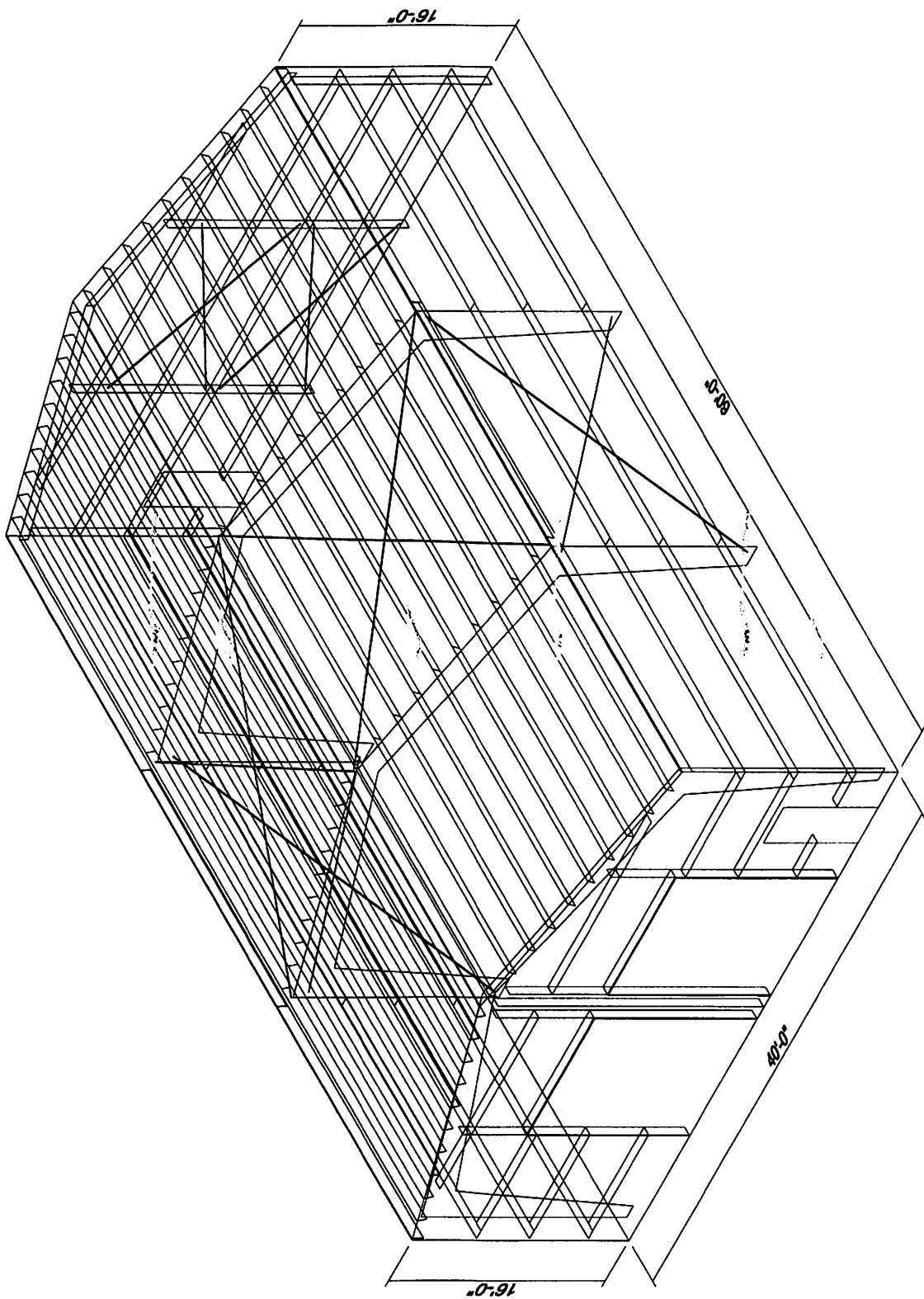
SPRUE BOLT TABLE					MEMBER TABLE					QUADRA FLANGE					INSIDE FLANGE				
Mark	Qty	Top	Bot	ht	Type	Dia	Length	Web Depth	Web Thickness	Length	W x T x L Length	W x T x L Length	W x T x L Length	W x T x L Length	W x T x L Length	W x T x L Length	W x T x L Length	W x T x L Length	W x T x L Length
SP-1	4	4	4	2	A325	1.000	2.50	12.017.5	0.135	4'-11 1/2"	5 x 1/4" x 15'-3 7/16"	5 x 1/4" x 15'-3 7/16"	5 x 1/4" x 15'-3 7/16"	5 x 1/4" x 15'-3 7/16"	5 x 1/4" x 15'-3 7/16"	5 x 1/4" x 15'-3 7/16"	5 x 1/4" x 15'-3 7/16"	5 x 1/4" x 15'-3 7/16"	5 x 1/4" x 15'-3 7/16"
SP-2	4	4	4	0	A325	0.625	2.00	17.527.0	0.188	10'-10 3/4"	5 x 1/4" x 5'-2 5/16"	5 x 1/4" x 5'-2 5/16"	5 x 1/4" x 5'-2 5/16"	5 x 1/4" x 5'-2 5/16"	5 x 1/4" x 5'-2 5/16"	5 x 1/4" x 5'-2 5/16"	5 x 1/4" x 5'-2 5/16"	5 x 1/4" x 5'-2 5/16"	5 x 1/4" x 5'-2 5/16"
								23.017.2	0.188	7'-9 15/16"	5 x 1/4" x 17'-3 1/8"	5 x 1/4" x 17'-3 1/8"	5 x 1/4" x 17'-3 1/8"	5 x 1/4" x 17'-3 1/8"	5 x 1/4" x 17'-3 1/8"	5 x 1/4" x 17'-3 1/8"	5 x 1/4" x 17'-3 1/8"	5 x 1/4" x 17'-3 1/8"	5 x 1/4" x 17'-3 1/8"
								17.210.0	0.135	8'-11"	5 x 1/4" x 17'-3 1/8"	5 x 1/4" x 17'-3 1/8"	5 x 1/4" x 17'-3 1/8"	5 x 1/4" x 17'-3 1/8"	5 x 1/4" x 17'-3 1/8"	5 x 1/4" x 17'-3 1/8"	5 x 1/4" x 17'-3 1/8"	5 x 1/4" x 17'-3 1/8"	5 x 1/4" x 17'-3 1/8"
								10.017.2	0.135	7'-9 15/16"	5 x 1/4" x 17'-3 1/8"	5 x 1/4" x 17'-3 1/8"	5 x 1/4" x 17'-3 1/8"	5 x 1/4" x 17'-3 1/8"	5 x 1/4" x 17'-3 1/8"	5 x 1/4" x 17'-3 1/8"	5 x 1/4" x 17'-3 1/8"	5 x 1/4" x 17'-3 1/8"	5 x 1/4" x 17'-3 1/8"
								17.212.0	0.188	7'-9 15/16"	5 x 1/4" x 17'-3 1/8"	5 x 1/4" x 17'-3 1/8"	5 x 1/4" x 17'-3 1/8"	5 x 1/4" x 17'-3 1/8"	5 x 1/4" x 17'-3 1/8"	5 x 1/4" x 17'-3 1/8"	5 x 1/4" x 17'-3 1/8"	5 x 1/4" x 17'-3 1/8"	5 x 1/4" x 17'-3 1/8"



RIGID FRAME ELEVATION: FRAME LINE 1

NOTE:
ALL DIMENSIONS, QUANTITIES, LOCATIONS,
SIZES, AND SPECIFICATIONS ARE SUBJECT TO BE
CHANGED UPON FINAL DESIGN AND RELEASE OF
PERMIT DRAWINGS.

										2. Minimum Data Set, 04/2009 Exempted, Colorado 04/12 Exempted, Georgia 04/12 Exempted, Illinois 04/12 Exempted, Indiana 04/12 Exempted, Michigan 04/12 Exempted, Minnesota 04/12 Exempted, Missouri 04/12 Exempted, Nevada 04/12 Exempted, New York 04/12 Exempted, North Carolina 04/12 Exempted, North Dakota 04/12 Exempted, Ohio 04/12 Exempted, Oklahoma 04/12 Exempted, Oregon 04/12 Exempted, Pennsylvania 04/12 Exempted, Rhode Island 04/12 Exempted, South Carolina 04/12 Exempted, South Dakota 04/12 Exempted, Tennessee 04/12 Exempted, Texas 04/12 Exempted, Utah 04/12 Exempted, Vermont 04/12 Exempted, Virginia 04/12 Exempted, Washington 04/12 Exempted, West Virginia 04/12 Exempted, Wisconsin 04/12 Exempted, Wyoming 04/12									
DESCRIPTION										RIGID FRAME ELEVATION									
CUSTOMER										CATHY BRENNER AND/OR YAKUTAT TUMBERT TR									
END USER										CATHY BRENNER AND/OR YAKUTAT TUMBERT TR									
SCALE										NOT TO SCALE									
PERMIT										JAN 17 2012									
DATE										JAN 17 2012									
BY										JAN 17 2012									
BY										JAN 17 2012									
BY										JAN 17 2012									
BY										JAN 17 2012									
BY										JAN 17 2012									
BY										JAN 17 2012									
BY										JAN 17 2012									
BY										JAN 17 2012									
BY										JAN 17 2012									
BY										JAN 17 2012									
BY										JAN 17 2012									
BY										JAN 17 2012									
BY										JAN 17 2012									
BY										JAN 17 2012									
BY										JAN 17 2012									
BY										JAN 17 2012									
BY										JAN 17 2012									
BY										JAN 17 2012									
BY										JAN 17 2012									
BY										JAN 17 2012									
BY										JAN 17 2012									
BY										JAN 17 2012									
BY										JAN 17 2012									
BY										JAN 17 2012									
BY										JAN 17 2012									
BY										JAN 17 2012									
BY										JAN 17 2012									
BY										JAN 17 2012									
BY										JAN 17 2012									
BY										JAN 17 2012									
BY										JAN 17 2012									
BY										JAN 17 2012									
BY										JAN 17 2012									
BY										JAN 17 2012									
BY										JAN 17 2012									
BY										JAN 17 2012									
BY										JAN 17 2012									
BY										JAN 17 2012									
BY										JAN 17 2012									
BY										JAN 17 2012									
BY										JAN 17 2012									
BY										JAN 17 2012									
BY										JAN 17 2012									
BY										JAN 17 2012									
BY										JAN 17 2012									
BY										JAN 17 2012									
BY										JAN 17 2012									
BY										JAN 17 2012									
BY										JAN 17 2012									
BY										JAN 17 2012									
BY										JAN 17 2012									
BY										JAN 17 2012									
BY										JAN 17 2012									
BY										JAN 17 2012									
BY										JAN 17 2012									
BY										JAN 17 2012									
BY										JAN 17 2012									
BY										JAN 17 2012									
BY										JAN 17 2012									
BY										JAN 17 2012									
BY										JAN 17 2012									
BY										JAN 17 2012									
BY										JAN 17 2012									
BY										JAN 17 2012									
BY										JAN 17 2012									
BY										JAN 17 2012									
BY										JAN 17 2012									
BY										JAN 17 2012									
BY										JAN 17 2012									
BY										JAN 17 2012									
BY										JAN 17 2012									
BY										JAN 17 2012									
BY										JAN 17 2012									
BY										JAN 17 2012									
BY										JAN 17 2012									
BY										JAN 17 2012									
BY										JAN 17 2012									
BY										JAN 17 2012									
BY										JAN 17 2012									
BY										JAN 17 2012									
BY										JAN 17 2012									
BY										JAN 17 2012									
BY										JAN 17 2012									
BY										JAN 17 2012									
BY										JAN 17 2012									
BY										JAN 17 2012									
BY										JAN 17 2012									
BY										JAN 17 2012									
BY										JAN 17 2012									
BY										JAN 17 2012									
BY										JAN 17 2012									
BY										JAN 17 2012									
BY										JAN 17 2012									
BY										JAN 17 2012									
BY										JAN 17 2012									
BY										JAN 17 2012									
BY										JAN 17 2012									
BY										JAN 17 2012									
BY										JAN 17 2012									
BY										JAN 17 2012									
BY										JAN 17 2012									
BY										JAN 17 2012									
BY										JAN 17 2012									
BY										JAN 17 2012									
BY										JAN 17 2012									
BY										JAN 17 2012									
BY										JAN 17 2012									
BY										JAN 17 2012									
BY										JAN 17 2012									
BY										JAN 17 2012									
BY										JAN 17 2012									
BY										JAN 17 2012									
BY										JAN 17 2012									
BY										JAN 17 2012									
BY										JAN 17 2012									
BY										JAN 17 2012									
BY										JAN 17 2012									
BY										JAN 17 2012									
BY										JAN 17 2012									
BY										JAN 17 2012									
BY										JAN 17 2012									
BY										JAN 17 2012									
BY										JAN 17 2012									
BY										JAN 17 2012									
BY										JAN 17 2012									
BY										JAN 17 2012									
BY										JAN 17 2012									
BY										JAN 17 2012									
BY										JAN 17 2012									
BY										JAN 17 2012									
BY										JAN 17 2012									
BY										JAN 17 2012									
BY										JAN 17 2012									
BY										JAN 17 2012									
BY										JAN 17 2012									
BY										JAN 17 2012									
BY										JAN 17 2012									
BY										JAN 17 2012									
BY										JAN 17 2012									
BY										JAN 17 2012									
BY										JAN 17 2012									
BY										JAN 17 2012									
BY										JAN 17 2012									
BY										JAN 17 2012									
BY										JAN 17 2012									
BY										JAN 17 2012									
BY										JAN 17 2012									
BY										JAN 17 2012									
BY										JAN 17 2012									
BY										JAN 17 2012									
BY										JAN 17 2012									
BY										JAN 17 2012									
BY										JAN 17 2012									
BY										JAN 17 2012									
BY										JAN 17 2012									
BY										JAN 17 2012									
BY										JAN 17 2012									
BY										JAN 17 2012									
BY										JAN 17 2012									
BY										JAN 17 2012									
BY										JAN 17 2012									
BY										JAN 17 2012									
BY										JAN 17 2012									
BY										JAN 17 2012									
BY										JAN 17 2012									
BY										JAN 17 2012									
BY										JAN 17 2012									
BY										JAN 17 2012									
BY										JAN 17 2012									
BY										JAN 17 2012									
BY										JAN 17 2012									
BY										JAN 17 2012									
BY										JAN 17 2012									
BY										JAN 17 2012									
BY										JAN 17 2012									
BY										JAN 17 2012									
BY										JAN 17 2012									
BY										JAN 17 2012									
BY										JAN 17 2012									
BY										JAN 17 2012									
BY										JAN 17 2012									
BY										JAN 17 2012									
BY										JAN 17 2012									
BY										JAN 17 2012									
BY										JAN 17 2012									
BY										JAN 17 2012									
BY										JAN 17 2012									
BY										JAN 17 2012									
BY										JAN 17 2012									
BY										JAN 17 2012									
BY										JAN 17 2012									
BY										JAN 17 2012									
BY										JAN 17 2012									
BY</																			

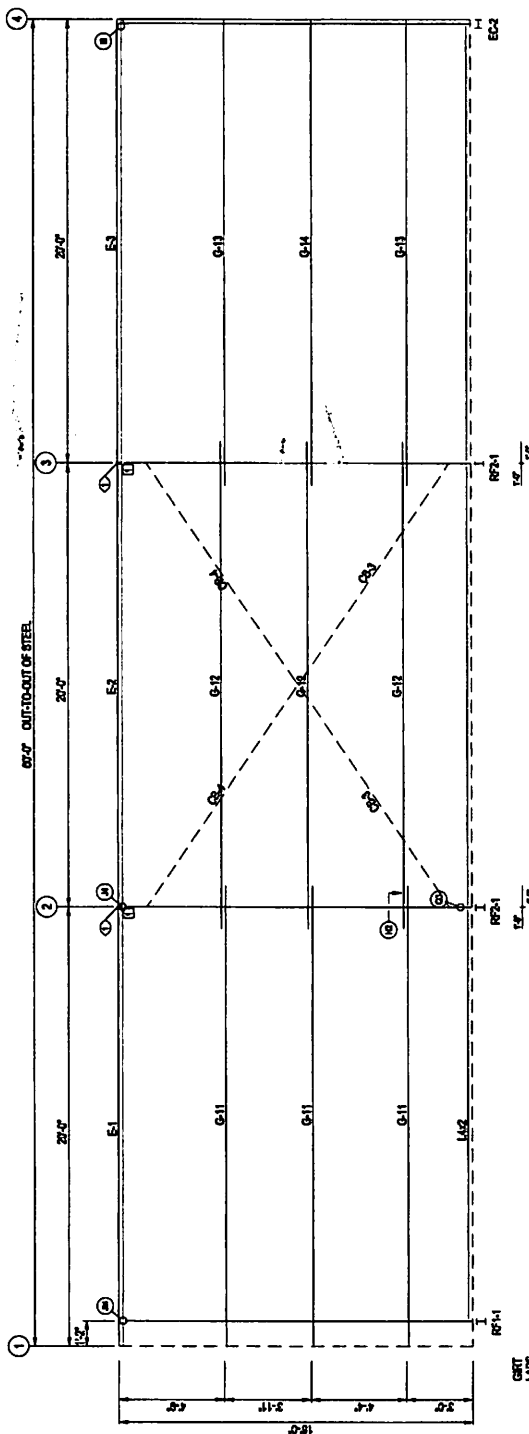


TRIM TABLE			
QID	QUAN	PART	LENGTH
1	3	BA204	20'-4"
2	2	OU182	18'-2"
3	3	OU1204	20'-4"
4	1	OU12	5'
5	1	AG65LL	7'-10"
6	1	OU1204	20'-4"
7	1	AG65LR	7'-10"

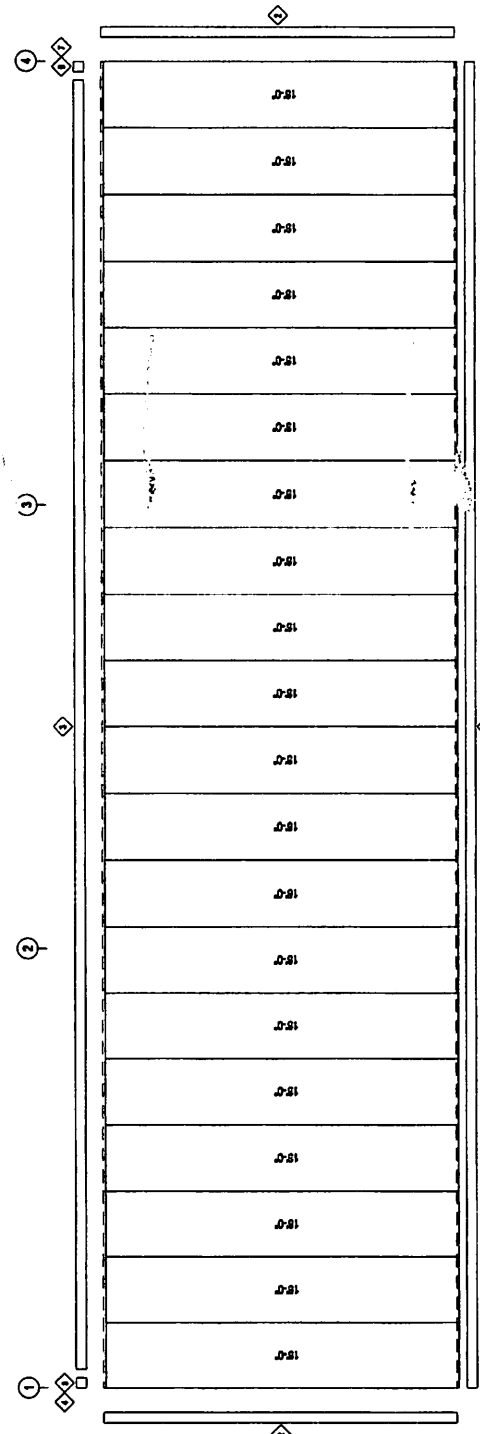
MEMBER TABLE			
QID	QUAN	PART	LENGTH
1	1	E-1	19'-11"
2	1	E-2	19'-11"
3	1	E-3	19'-11"
4	1	G-11	27'-11 1/2"
5	1	G-12	22'-4"
6	1	G-13	27'-11 1/2"
7	1	G-14	27'-11 1/2"
8	1	CB-3	20'-0"
9	1	CB-4	4'-10 3/4"

SPECIAL BOLTS			
OID	QUAN	TYPE	LENGTH
1	4	A307	1 1/4"
2	2		

CONNECTION PLATES			
OID	QUAN	MARK	PART
1	1	FRAME LINE A	
2	2	BC-44	



FRONT SIDEWALL FRAMING: FRAME LINE A



NOTE:
ALL DIMENSIONS, QUANTITIES, LOCATIONS, SIZES, AND SPECIFICATIONS ARE SUBJECT TO BE CHANGED UPON FINAL DESIGN AND RELEASE OF PERMIT DRAWINGS.

FRONT SIDEWALL SHEETING & TRIM: FRAME LINE A
PANELS: 20' On. H-Loc - Head SAMP Color

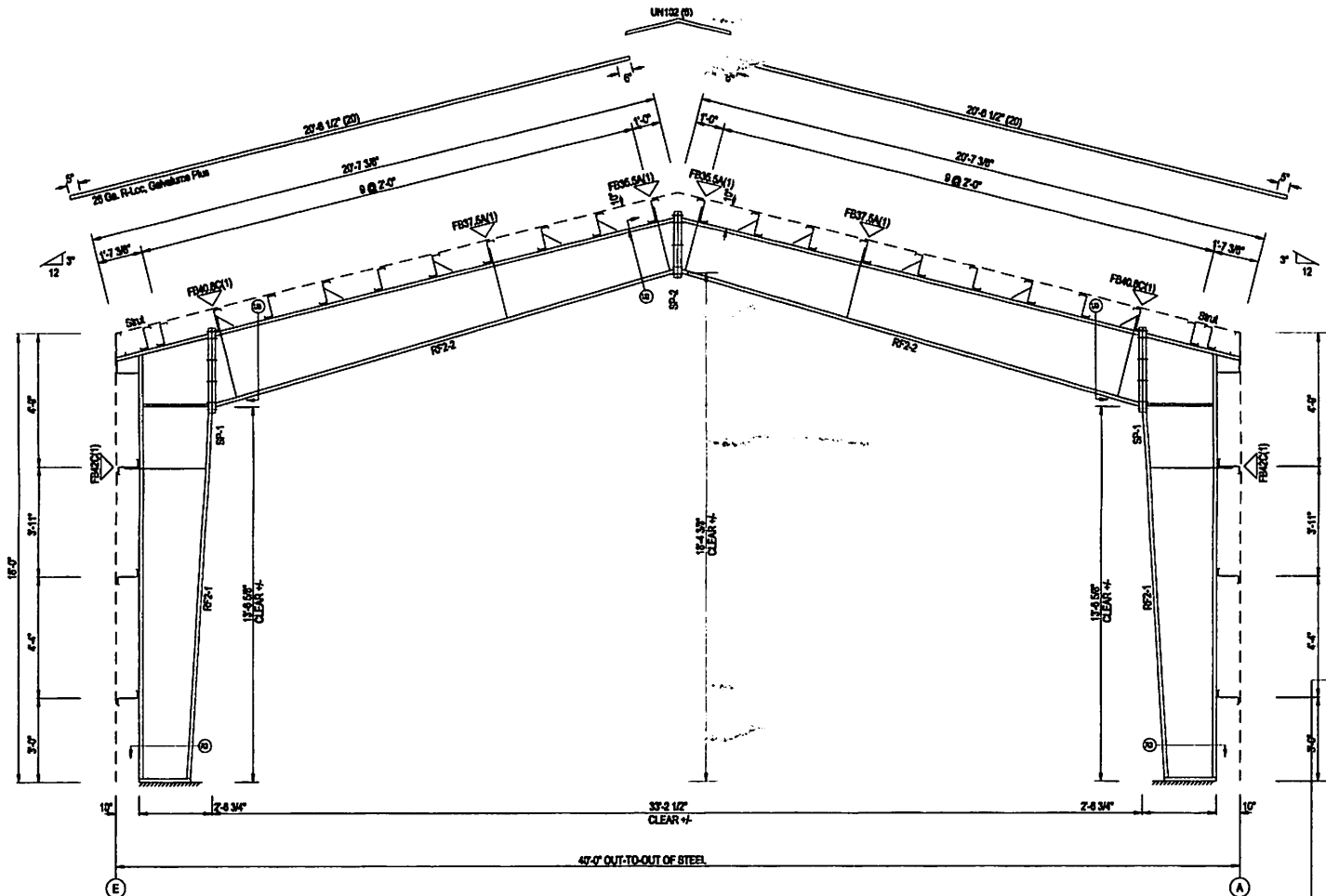
ISSUE	DESCRIPTION	DATE	DES.	CHK.	DES.
1	PERMIT				

DESCRIPTION	QUAN	UNIT	SCALE	DATE	BY	OF
SIDEWALL FRAMING & SHEETING						
CUSTOMER	CATY BREMER AND/OR VAUGHAN TR					
END USER	CATY BREMER AND/OR VAUGHAN TR					
SCALE	NOT TO SCALE					
56466						

SPLICE BOLT TABLE						
Mark	Qty Top	Qty Bot	Int	Type	Dia	Length
SP-1	4	4	4	A325	1.000	2.75
SP-2	4	4	2	A325	0.625	2.25

▽ FLANGE BRACES: FBxx (1 or 2)
 xx=length(in)
 (1) One Side; (2) Two Sides
 C - L25X25X3
 A - B313

MEMBER TABLE					
Mark	Web Depth Start/End	Web Plate Thick	Web Plate Length	Outside Flange W x Thk x Length	Inside Flange W x Thk x Length
RF2-1	19.0/23.1	0.188	4'-11 1/2"	6 x 1/4" x 15'-3 7/16"	6 x 5/16" x 4'-5 5/8"
RF2-2	23.1/30.0	0.250	10'-11 1/2"	6 x 1/4" x 3'-5 7/16"	6 x 1/2" x 5'-8 13/16"
	28.0/24.4	0.250	7'-7 11/16"	6 x 1/4" x 18'-11 5/8"	6 x 3/8" x 8'-1 3/4"
	24.4/20.0	0.188	9'-11"		6 x 1/4" x 9'-0"



RIGID FRAME ELEVATION: FRAME LINE 2 3

NOTE:
 ALL DIMENSIONS, QUANTITIES, LOCATIONS,
 SIZES, AND SPECIFICATIONS ARE SUBJECT TO BE
 CHANGED UPON FINAL DESIGN AND RELEASE OF
 PERMIT DRAWINGS.

ISSUE	DESCRIPTION	DATE	DRN	CHK	DES.
P	PERMIT	2019	MBS	MBS	MZ



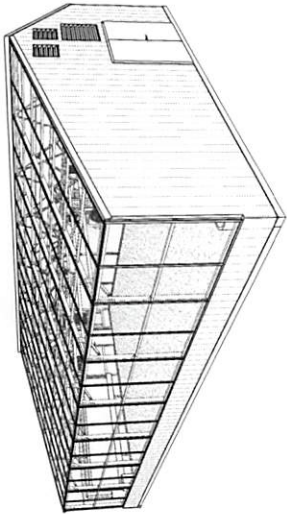
2 Inverness Drive East, Suite 200
 Englewood, Colorado 80112
 PHONE: 303-746-4510
 www.cathybremner.com

DESCRIPTION	RIGID FRAME ELEVATION			
CUSTOMER	CATHY BREMNER AND/OR YAKUTAT TLINGIT TR			
END USER	CATHY BREMNER AND/OR YAKUTAT TLINGIT TR			
SCALE	NOT TO SCALE			
204 (0)	56466	DATE	7/31/20	BY
		OF		P

Wisner Pilger Public Schools

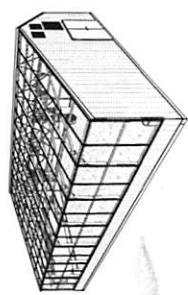
30' x 57' HIGH YIELD GREENHOUSE

801 18th St N.
Wisner, NE 68791

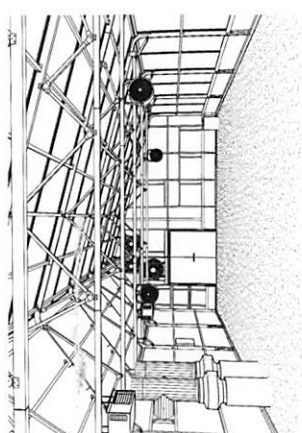


CLIENT	INDEX OF DRAWINGS
W A Krueger - Wisner Pilger Public Schools 801 18th St N. Wisner, NE 68791	COVER SHEET
DESIGN PROFESSIONAL SERIES ENGINEERING SOLUTIONS 1808 S PLATONIC CT SUITE 105 WILSONVILLE, OR 97150 P: 503.655.5008	CONTRACT C1.0 C1.1 C1.2 C1.3 C1.4 C1.5 C1.6 C1.7 C1.8 C1.9 C1.10 C1.11 C1.12 C1.13 C1.14 C1.15 C1.16 C1.17 C1.18 C1.19 C1.20 C1.21 C1.22 C1.23 C1.24 C1.25 C1.26 C1.27 C1.28 C1.29 C1.30 C1.31 C1.32 C1.33 C1.34 C1.35 C1.36 C1.37 C1.38 C1.39 C1.40 C1.41 C1.42 C1.43 C1.44 C1.45 C1.46 C1.47 C1.48 C1.49 C1.50 C1.51 C1.52 C1.53 C1.54 C1.55 C1.56 C1.57 C1.58 C1.59 C1.60 C1.61 C1.62 C1.63 C1.64 C1.65 C1.66 C1.67 C1.68 C1.69 C1.70 C1.71 C1.72 C1.73 C1.74 C1.75 C1.76 C1.77 C1.78 C1.79 C1.80 C1.81 C1.82 C1.83 C1.84 C1.85 C1.86 C1.87 C1.88 C1.89 C1.90 C1.91 C1.92 C1.93 C1.94 C1.95 C1.96 C1.97 C1.98 C1.99 C1.100 C1.101 C1.102 C1.103 C1.104 C1.105 C1.106 C1.107 C1.108 C1.109 C1.110 C1.111 C1.112 C1.113 C1.114 C1.115 C1.116 C1.117 C1.118 C1.119 C1.120 C1.121 C1.122 C1.123 C1.124 C1.125 C1.126 C1.127 C1.128 C1.129 C1.130 C1.131 C1.132 C1.133 C1.134 C1.135 C1.136 C1.137 C1.138 C1.139 C1.140 C1.141 C1.142 C1.143 C1.144 C1.145 C1.146 C1.147 C1.148 C1.149 C1.150 C1.151 C1.152 C1.153 C1.154 C1.155 C1.156 C1.157 C1.158 C1.159 C1.160 C1.161 C1.162 C1.163 C1.164 C1.165 C1.166 C1.167 C1.168 C1.169 C1.170 C1.171 C1.172 C1.173 C1.174 C1.175 C1.176 C1.177 C1.178 C1.179 C1.180 C1.181 C1.182 C1.183 C1.184 C1.185 C1.186 C1.187 C1.188 C1.189 C1.190 C1.191 C1.192 C1.193 C1.194 C1.195 C1.196 C1.197 C1.198 C1.199 C1.200 C1.201 C1.202 C1.203 C1.204 C1.205 C1.206 C1.207 C1.208 C1.209 C1.210 C1.211 C1.212 C1.213 C1.214 C1.215 C1.216 C1.217 C1.218 C1.219 C1.220 C1.221 C1.222 C1.223 C1.224 C1.225 C1.226 C1.227 C1.228 C1.229 C1.230 C1.231 C1.232 C1.233 C1.234 C1.235 C1.236 C1.237 C1.238 C1.239 C1.240 C1.241 C1.242 C1.243 C1.244 C1.245 C1.246 C1.247 C1.248 C1.249 C1.250 C1.251 C1.252 C1.253 C1.254 C1.255 C1.256 C1.257 C1.258 C1.259 C1.260 C1.261 C1.262 C1.263 C1.264 C1.265 C1.266 C1.267 C1.268 C1.269 C1.270 C1.271 C1.272 C1.273 C1.274 C1.275 C1.276 C1.277 C1.278 C1.279 C1.280 C1.281 C1.282 C1.283 C1.284 C1.285 C1.286 C1.287 C1.288 C1.289 C1.290 C1.291 C1.292 C1.293 C1.294 C1.295 C1.296 C1.297 C1.298 C1.299 C1.300 C1.301 C1.302 C1.303 C1.304 C1.305 C1.306 C1.307 C1.308 C1.309 C1.310 C1.311 C1.312 C1.313 C1.314 C1.315 C1.316 C1.317 C1.318 C1.319 C1.320 C1.321 C1.322 C1.323 C1.324 C1.325 C1.326 C1.327 C1.328 C1.329 C1.330 C1.331 C1.332 C1.333 C1.334 C1.335 C1.336 C1.337 C1.338 C1.339 C1.340 C1.341 C1.342 C1.343 C1.344 C1.345 C1.346 C1.347 C1.348 C1.349 C1.350 C1.351 C1.352 C1.353 C1.354 C1.355 C1.356 C1.357 C1.358 C1.359 C1.360 C1.361 C1.362 C1.363 C1.364 C1.365 C1.366 C1.367 C1.368 C1.369 C1.370 C1.371 C1.372 C1.373 C1.374 C1.375 C1.376 C1.377 C1.378 C1.379 C1.380 C1.381 C1.382 C1.383 C1.384 C1.385 C1.386 C1.387 C1.388 C1.389 C1.390 C1.391 C1.392 C1.393 C1.394 C1.395 C1.396 C1.397 C1.398 C1.399 C1.400 C1.401 C1.402 C1.403 C1.404 C1.405 C1.406 C1.407 C1.408 C1.409 C1.410 C1.411 C1.412 C1.413 C1.414 C1.415 C1.416 C1.417 C1.418 C1.419 C1.420 C1.421 C1.422 C1.423 C1.424 C1.425 C1.426 C1.427 C1.428 C1.429 C1.430 C1.431 C1.432 C1.433 C1.434 C1.435 C1.436 C1.437 C1.438 C1.439 C1.440 C1.441 C1.442 C1.443 C1.444 C1.445 C1.446 C1.447 C1.448 C1.449 C1.450 C1.451 C1.452 C1.453 C1.454 C1.455 C1.456 C1.457 C1.458 C1.459 C1.460 C1.461 C1.462 C1.463 C1.464 C1.465 C1.466 C1.467 C1.468 C1.469 C1.470 C1.471 C1.472 C1.473 C1.474 C1.475 C1.476 C1.477 C1.478 C1.479 C1.480 C1.481 C1.482 C1.483 C1.484 C1.485 C1.486 C1.487 C1.488 C1.489 C1.490 C1.491 C1.492 C1.493 C1.494 C1.495 C1.496 C1.497 C1.498 C1.499 C1.500 C1.501 C1.502 C1.503 C1.504 C1.505 C1.506 C1.507 C1.508 C1.509 C1.510 C1.511 C1.512 C1.513 C1.514 C1.515 C1.516 C1.517 C1.518 C1.519 C1.520 C1.521 C1.522 C1.523 C1.524 C1.525 C1.526 C1.527 C1.528 C1.529 C1.530 C1.531 C1.532 C1.533 C1.534 C1.535 C1.536 C1.537 C1.538 C1.539 C1.540 C1.541 C1.542 C1.543 C1.544 C1.545 C1.546 C1.547 C1.548 C1.549 C1.550 C1.551 C1.552 C1.553 C1.554 C1.555 C1.556 C1.557 C1.558 C1.559 C1.560 C1.561 C1.562 C1.563 C1.564 C1.565 C1.566 C1.567 C1.568 C1.569 C1.570 C1.571 C1.572 C1.573 C1.574 C1.575 C1.576 C1.577 C1.578 C1.579 C1.580 C1.581 C1.582 C1.583 C1.584 C1.585 C1.586 C1.587 C1.588 C1.589 C1.590 C1.591 C1.592 C1.593 C1.594 C1.595 C1.596 C1.597 C1.598 C1.599 C1.600 C1.601 C1.602 C1.603 C1.604 C1.605 C1.606 C1.607 C1.608 C1.609 C1.610 C1.611 C1.612 C1.613 C1.614 C1.615 C1.616 C1.617 C1.618 C1.619 C1.620 C1.621 C1.622 C1.623 C1.624 C1.625 C1.626 C1.627 C1.628 C1.629 C1.630 C1.631 C1.632 C1.633 C1.634 C1.635 C1.636 C1.637 C1.638 C1.639 C1.640 C1.641 C1.642 C1.643 C1.644 C1.645 C1.646 C1.647 C1.648 C1.649 C1.650 C1.651 C1.652 C1.653 C1.654 C1.655 C1.656 C1.657 C1.658 C1.659 C1.660 C1.661 C1.662 C1.663 C1.664 C1.665 C1.666 C1.667 C1.668 C1.669 C1.670 C1.671 C1.672 C1.673 C1.674 C1.675 C1.676 C1.677 C1.678 C1.679 C1.680 C1.681 C1.682 C1.683 C1.684 C1.685 C1.686 C1.687 C1.688 C1.689 C1.690 C1.691 C1.692 C1.693 C1.694 C1.695 C1.696 C1.697 C1.698 C1.699 C1.700 C1.701 C1.702 C1.703 C1.704 C1.705 C1.706 C1.707 C1.708 C1.709 C1.710 C1.711 C1.712 C1.713 C1.714 C1.715 C1.716 C1.717 C1.718 C1.719 C1.720 C1.721 C1.722 C1.723 C1.724 C1.725 C1.726 C1.727 C1.728 C1.729 C1.730 C1.731 C1.732 C1.733 C1.734 C1.735 C1.736 C1.737 C1.738 C1.739 C1.740 C1.741 C1.742 C1.743 C1.744 C1.745 C1.746 C1.747 C1.748 C1.749 C1.750 C1.751 C1.752 C1.753 C1.754 C1.755 C1.756 C1.757 C1.758 C1.759 C1.760 C1.761 C1.762 C1.763 C1.764 C1.765 C1.766 C1.767 C1.768 C1.769 C1.770 C1.771 C1.772 C1.773 C1.774 C1.775 C1.776 C1.777 C1.778 C1.779 C1.780 C1.781 C1.782 C1.783 C1.784 C1.785 C1.786 C1.787 C1.788 C1.789 C1.790 C1.791 C1.792 C1.793 C1.794 C1.795 C1.796 C1.797 C1.798 C1.799 C1.800 C1.801 C1.802 C1.803 C1.804 C1.805 C1.806 C1.807 C1.808 C1.809 C1.810 C1.811 C1.812 C1.813 C1.814 C1.815 C1.816 C1.817 C1.818 C1.819 C1.820 C1.821 C1.822 C1.823 C1.824 C1.825 C1.826 C1.827 C1.828 C1.829 C1.830 C1.831 C1.832 C1.833 C1.834 C1.835 C1.836 C1.837 C1.838 C1.839 C1.840 C1.841 C1.842 C1.843 C1.844 C1.845 C1.846 C1.847 C1.848 C1.849 C1.850 C1.851 C1.852 C1.853 C1.854 C1.855 C1.856 C1.857 C1.858 C1.859 C1.860 C1.861 C1.862 C1.863 C1.864 C1.865 C1.866 C1.867 C1.868 C1.869 C1.870 C1.871 C1.872 C1.873 C1.874 C1.875 C1.876 C1.877 C1.878 C1.879 C1.880 C1.881 C1.882 C1.883 C1.884 C1.885 C1.886 C1.887 C1.888 C1.889 C1.890 C1.891 C1.892 C1.893 C1.894 C1.895 C1.896 C1.897 C1.898 C1.899 C1.900 C1.901 C1.902 C1.903 C1.904 C1.905 C1.906 C1.907 C1.908 C1.909 C1.910 C1.911 C1.912 C1.913 C1.914 C1.915 C1.916 C1.917 C1.918 C1.919 C1.920 C1.921 C1.922 C1.923 C1.924 C1.925 C1.926 C1.927 C1.928 C1.929 C1.930 C1.931 C1.932 C1.933 C1.934 C1.935 C1.936 C1.937 C1.938 C1.939 C1.940 C1.941 C1.942 C1.943 C1.944 C1.945 C1.946 C1.947 C1.948 C1.949 C1.950 C1.951 C1.952 C1.953 C1.954 C1.955 C1.956 C1.957 C1.958 C1.959 C1.960 C1.961 C1.962 C1.963 C1.964 C1.965 C1.966 C1.967 C1.968 C1.969 C1.970 C1.971 C1.972 C1.973 C1.974 C1.975 C1.976 C1.977 C1.978 C1.979 C1.980 C1.981 C1.982 C1.983 C1.984 C1.985 C1.986 C1.987 C1.988 C1.989 C1.990 C1.991 C1.992 C1.993 C1.994 C1.995 C1.996 C1.997 C1.998 C1.999 C2.0 C2.1 C2.2 C2.3 C2.4 C2.5 C2.6 C2.7 C2.8 C2.9 C2.10 C2.11 C2.12 C2.13 C2.14 C2.15 C2.16 C2.17 C2.18 C2.19 C2.20 C2.21 C2.22 C2.23 C2.24 C2.25 C2.26 C2.27 C2.28 C2.29 C2.30 C2.31 C2.32 C2.33 C2.34 C2.35 C2.36 C2.37 C2.38 C2.39 C2.40 C2.41 C2.42 C2.43 C2.44 C2.45 C2.46 C2.47 C2.48 C2.49 C2.50 C2.51 C2.52 C2.53 C2.54 C2.55 C2.56 C2.57 C2.58 C2.59 C2.60 C2.61 C2.62 C2.63 C2.64 C2.65 C2.66 C2.67 C2.68 C2.69 C2.70 C2.71 C2.72 C2.73 C2.74 C2.75 C2.76 C2.77 C2.78 C2.79 C2.80 C2.81 C2.82 C2.83 C2.84 C2.85 C2.86 C2.87 C2.88 C2.89 C2.90 C2.91 C2.92 C2.93 C2.94 C2.95 C2.96 C2.97 C2.98 C2.99 C3.0 C3.1 C3.2 C3.3 C3.4 C3.5 C3.6 C3.7 C3.8 C3.9 C3.10 C3.11 C3.12 C3.13 C3.14 C3.15 C3.16 C3.17 C3.18 C3.19 C3.20 C3.21 C3.22 C3.23 C3.24 C3.25 C3.26 C3.27 C3.28 C3.29 C3.30 C3.31 C3.32 C3.33 C3.34 C3.35 C3.36 C3.37 C3.38 C3.39 C3.40 C3.41 C3.42 C3.43 C3.44 C3.45 C3.46 C3.47 C3.48 C3.49 C3.50 C3.51 C3.52 C3.53 C3.54 C3.55 C3.56 C3.57 C3.58 C3.59 C3.60 C3.61 C3.62 C3.63 C3.64 C3.65 C3.66 C3.67 C3.68 C3.69 C3.70 C3.71 C3.72 C3.73 C3.74 C3.75 C3.76 C3.77 C3.78 C3.79 C3.80 C3.81 C3.82 C3.83 C3.84 C3.85 C3.86 C3.87 C3.88 C3.89 C3.90 C3.91 C3.92 C3.93 C3.94 C3.95 C3.96 C3.97 C3.98 C3.99 C4.0 C4.1 C4.2 C4.3 C4.4 C4.5 C4.6 C4.7 C4.8 C4.9 C4.10 C4.11 C4.12 C4.13 C4.14 C4.15 C4.16 C4.17 C4.18 C4.19 C4.20 C4.21 C4.22 C4.23 C4.24 C4.25 C4.26 C4.27 C4.28 C4.29 C4.30 C4.31 C4.32 C4.33 C4.34 C4.35 C4.36 C4.37 C4.38 C4.39 C4.40 C4.41 C4.42 C4.43 C4.44 C4.45 C4.46 C4.47 C4.48 C4.49 C4.50 C4.51 C4.52 C4.53 C4.54 C4.55 C4.56 C4.57 C4.58 C4.59 C4.60 C4.61 C4.62 C4.63 C4.64 C4.65 C4.66 C4.67 C4.68 C4.69 C4.70 C4.71 C4.72 C4.73 C4.74 C4.75 C4.76 C4.77 C4.78 C4.79 C4.80 C4.81 C4.82 C4.83 C4.84 C4.85 C4.86 C4.87 C4.88 C4.89 C4.90 C4.91 C4.92 C4.93 C4.94 C4.95 C4.96 C4.97 C4.98 C4.99 C5.0 C5.1 C5.2 C5.3 C5.4 C5.5 C5.6 C5.7 C5.8 C5.9 C5.10 C5.11 C5.12 C5.13 C5.14 C5.15 C5.16 C5.17 C5.18 C5.19 C5.20 C5.21 C5.22 C5.23 C5.24 C5.25 C5.26 C5.27 C5.28 C5.29 C5.30 C5.31 C5.32 C5.33 C5.34 C5.35 C5.36 C5.37 C5.38 C5.39 C5.40 C5.41 C5.42 C5.43 C5.44 C5.45 C5.46 C5.47 C5.48 C5.49 C5.50 C5.51 C5.52 C5.53 C5.54 C5.55 C5.56 C5.57 C5.58 C5.59 C5.60 C5.61 C5.62 C5.63 C5.64 C5.65 C5.66 C5.67 C5.68 C5.69 C5.70 C5.71 C5.72 C5.73 C5.74 C5.75 C5.76 C5.77 C5.78 C5.79 C5.80 C5.81 C5.82 C5.83 C5.84 C5.85 C5.86 C5.87 C5.88 C5.89 C5.90 C5.91 C5.92 C5.93 C5.94 C5.95 C5.96 C5.97 C5.98 C5.99 C6.0 C6.1 C6.2 C6.3 C6.4 C6.5 C6.6 C6.7 C6.8 C6.9 C6.10 C6.11 C6.12 C6.13 C6.14 C6.15 C6.16 C6.17 C6.18 C6.19 C6.20 C6.21 C6.22 C6.23 C6.24 C6.25 C6.26 C6.27 C6.28 C6.29 C6.30 C6.31 C6.32 C6.33 C6.34 C6.35 C6.36 C6.37 C6.38 C6.39 C6.40 C6.41 C6.42 C6.43 C6.44 C6.45 C6.46 C6.47 C6.48 C6.49 C6.50 C6.51 C6.52 C6.53 C6.54 C6.55 C6.56 C6.57 C6.58 C6.59 C6.60 C6.61 C6.62 C6.63 C6.64 C6.65 C6.66 C6.67 C6.68 C6.69 C6.70 C6.71 C6.72 C6.73 C6.74 C6.75 C6.76 C6.77 C6.78 C6.79 C6.80 C6.81 C6.82 C6.83 C6.84 C6.85 C6.86 C6.87 C6.88 C6.89 C6.90 C6.91 C6.92 C6.93 C6.94 C6.95 C6.96 C6.97 C6.98 C6.99 C7.0 C7.1 C7.2 C7.3 C7.4 C7.5 C7.6 C7.7 C7.8 C7.9 C7.10 C7.11 C7.12 C7.13 C7.14 C7.15 C7.16 C7.17 C7.18 C7.19 C7.20 C7.21 C7.22 C7.23 C7.24 C7.25 C7.26 C7.27 C7.28 C7.29 C7.30 C7.31 C7.32 C7.33 C7.34 C7.35 C7.36 C7.37 C7.38 C7.39 C7.40 C7.41 C7.42 C7.43 C7.44 C7.45 C7.46 C7.47 C7.48 C7.49 C7.50 C7.51 C7.52 C7.53 C7.54 C7.55 C7.56 C7.57 C7.58 C7.59 C7.60 C7.61 C7.62 C7.63 C7.64 C7.65 C7.66 C7.67 C7.68 C7.69 C7.70 C7.71 C7.72 C7.73 C7.74 C7.75 C7.76 C7.77 C7.78 C7.79 C7.80 C7.81 C7.82 C7.83 C7.84 C7.85 C7.86 C7.87 C7.88 C7.89 C7.90 C7.91

LIFE IN BRUNNEN IN THE LOW



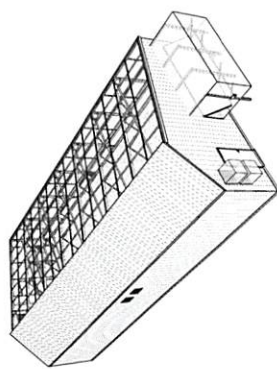
3
A10



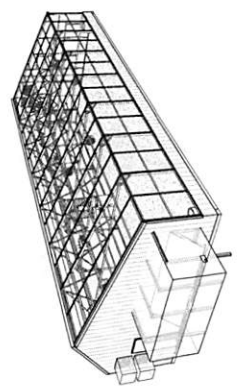
6 CD EAST INTERIOR PERSPECTIVE



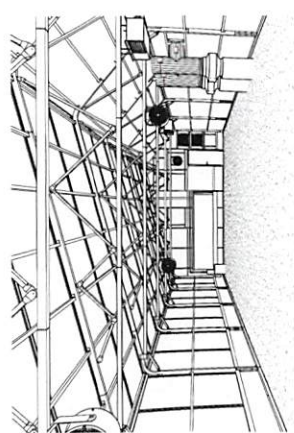
2 CD SOUTH PERSPECTIVE A10



5 CD NORTH WEST PERSPECTIVE



CD SW PERSPECTIVE



4 CD WEST INTERIOR PERSPECTIVE

COMPOST
UNIT



**GREEN MOUNTAIN
TECHNOLOGIES**
COMMERCIAL COMPOSTING SOLUTIONS

Date: August 20, 2020
To: Jonathan Rubbo, Yakutat Tlingit Tribe
From: Michael Cole, Project Manager, Green Mountain Technologies (GMT)
Subject: Quote for the Earth Flow Composting Systems

Hi Jon, we are pleased to submit this quote to you for the 2008-Site Built Earth Flow™ composting system.

System Pricing and Recommended Features:	2008 SB System
Vessel Footprint	20'L x 7.5'W x 4'D
Max Processing Capacity (@ 21 day retention, total feedstocks)	0.6 tons/day ¹
Total Capacity	22 cubic yards
Earth Flow Mixing System	\$39,890
Freight (from Sandusky, Ohio to Yakutat, AK)	\$5,000 ²
Installation and Training (including travel expenses)	\$4,500 ²
Total:	\$49,390

¹ Assumes an aggregate bulk density of 850 lbs per cubic yard and a **continuous flow** of inputs as well as some reduction of volume in vessel.

² Subject to change based on current transportation costs and conditions.

The following information specifies pricing for recommended (*) and optional features.

Optional Features:	Price
Positive Aeration System	\$3,500 ^{3*}
Moisture Addition System	\$990*
Spare Parts Package	\$995*
Replacement Bolt-On Auger Flighting (4 sections per set)	\$1,295*
Manual Temperature Measurement Ports (1 port)	\$290*
Piping for Pile-Based Biofilter	\$990*
Tote Loader with Hydraulic Package (compatible with 64-gallon rolling totes)	\$11,980
7.5 hp Auger Motor Upgrade	\$990
Custom Placement of Electrical Control Panel	\$750
Automatic Discharge (Angled Wall and Chute on Discharge End)	\$6,995
Single Phase Power (if 3-phase power is not available at the site)	\$895
Extended Annual Parts Only Warranty	\$2,980/year ⁴

³ Design and blower with controls – Piping and installation not included

⁴ This extended warranty is for replacement of defective parts only. It does not include labor to remove or install components. It does not include repair/replacement of wear items (such as auger flighting, slide blocks, chains) that require periodic replacement. Our Standard Warranty is a 1-year parts only warranty.

